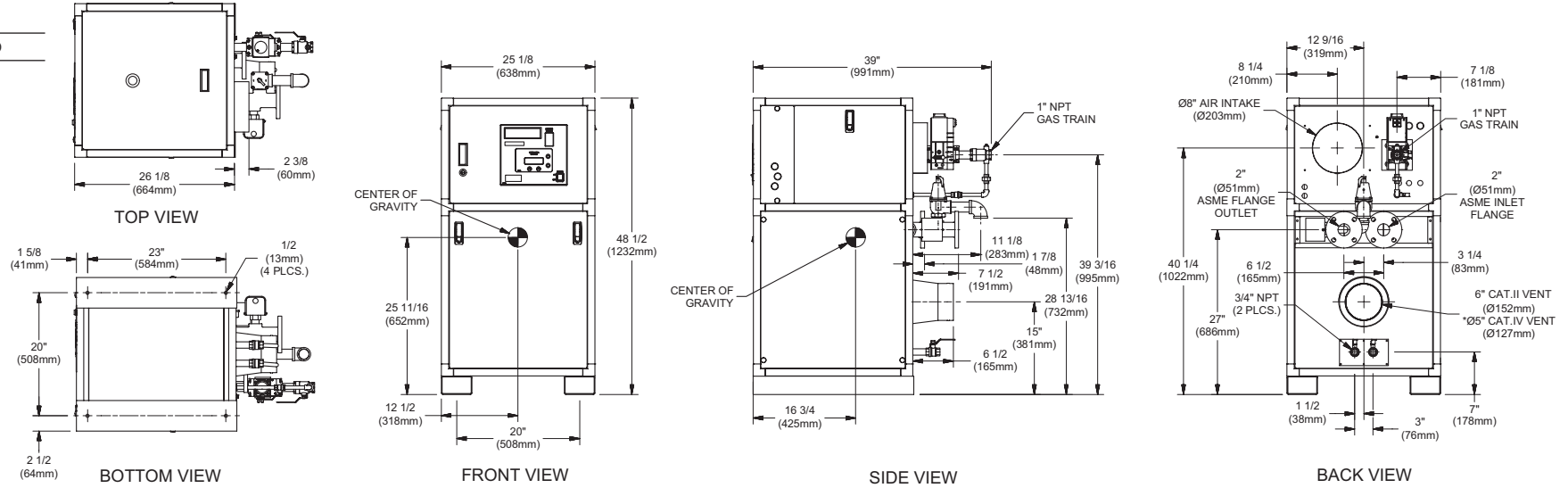


# INDOOR UNIT

RSUB-55-K

## CODE OPTIONS

**CSD-1** Manual Reset LWCO



**Notes:**

1. Dimensions are approximate and should not be used to "rough-in" equipment.
2. Dimensions are subject to change without notice.

## BOILER CERTIFIED RATINGS & CAPACITIES

|                                |  |                                   |                    |
|--------------------------------|--|-----------------------------------|--------------------|
| <b>Fuel Type</b>               | Natural/Propane Gas                      | <b>Boiler FLA</b>                 | 4.4*               |
| <b>Input BTU/hr.</b>           | 500,000 / 147 kW                         | <b>Min. Gas Pressure Required</b> | 2" W.C.**          |
| <b>Output BTU/hr.</b>          | 428,000 / 125 kW                         | <b>Max. Gas Pressure Allowed</b>  | 14" W.C.           |
| <b>Electrical Requirements</b> | (L1, NEU, GND)<br>120 VAC / 1 ph / 60 hz | <b>Operating Weight</b>           | 487 lbs. / 221 kg. |

## BOILER TEMPERATURE RISE / PRESSURE DROP

| 20°F / 11.1°C |     |               |     | 25°F / 13.9°C |     |               |     |
|---------------|-----|---------------|-----|---------------|-----|---------------|-----|
| Flow Rate     |     | Pressure Drop |     | Flow Rate     |     | Pressure Drop |     |
| GPM           | L/s | Ft            | kPa | GPM           | L/s | Ft            | kPa |
| 42.8          | 2.7 | 0.53          | 1.6 | 34.2          | 2.2 | 0.35          | 1.0 |

## BOILER / WATER HEATER TRIM & CONTROLS

|                          |                   |                          |                           |
|--------------------------|-------------------|--------------------------|---------------------------|
| <b>Main Gas Valve</b>    | Dungs MBC-SE      | <b>Air Switch</b>        | Cleveland NS2             |
| <b>Firing Valve</b>      | 1"                | <b>Blower Motor</b>      | Fasco 1/2 hp - FLA 1.8    |
| <b>Ignition Control</b>  | Honeywell RM7895C | <b>Relief Valve - MW</b> | 3/4" x 3/4" set @ 125 psi |
| <b>Operating Control</b> | HeatNet®          | <b>Relief Valve - MB</b> | 3/4" x 3/4" set @ 50 psi  |
| <b>High Limit</b>        | Jumo              | <b>Flow Switch</b>       | TACO                      |
| <b>Main Ball Valve</b>   | 1"                | <b>Pilot Regulator</b>   | White-Rodgers 25M         |

## WATER HEATER HOURLY RECOVERY CAPACITY (GPH & LPH)

| 40°F | 22°C | 60°F | 33°C | 80°F | 44°C | 100°F | 56°C | 120°F | 67°C | 140°F | 78°C |
|------|------|------|------|------|------|-------|------|-------|------|-------|------|
| 1230 | 4651 | 820  | 3101 | 615  | 2326 | 492   | 1861 | 410   | 1550 | 352   | 1329 |

## A.S.M.E.

|                                 |                             |                    |                       |
|---------------------------------|-----------------------------|--------------------|-----------------------|
| <b>ASME Sect IV Htg Surface</b> | 69.51 Sq. Ft. / 6.46 Sq. M. | <b>Design Data</b> | Max. 160 psig & 250°F |
| <b>Water Volume</b>             | 3.4 gal / 12.87 Liters      |                    |                       |

\* Add circulator amps.

\*\* For incoming gas pressures lower than 2" W.C. natural or propane, consult factory.

**REP FIRM** \_\_\_\_\_  
**SUBMITTED BY** \_\_\_\_\_  
**JOB NAME** \_\_\_\_\_  
**ARCHITECT** \_\_\_\_\_  
**ENGINEER** \_\_\_\_\_  
**CONTRACTOR** \_\_\_\_\_  
**DATE** \_\_\_\_\_

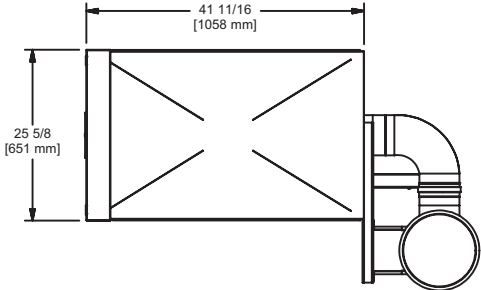
# FUTERA III 500

**Category II or IV Appliance**  
 (see Installation and Operation Manual for venting information)

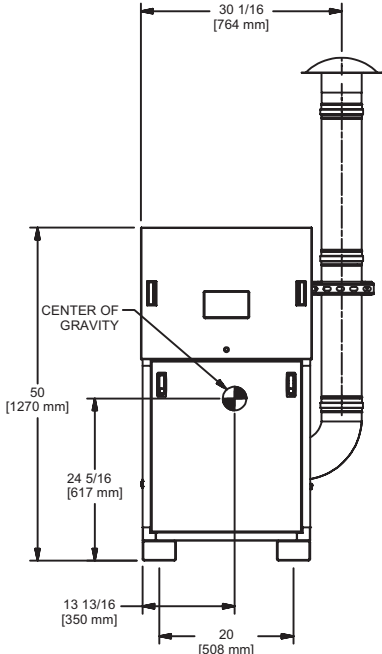


A Division of Mestek, Inc.  
 Westfield, MA 01085  
 (413) 568-9571

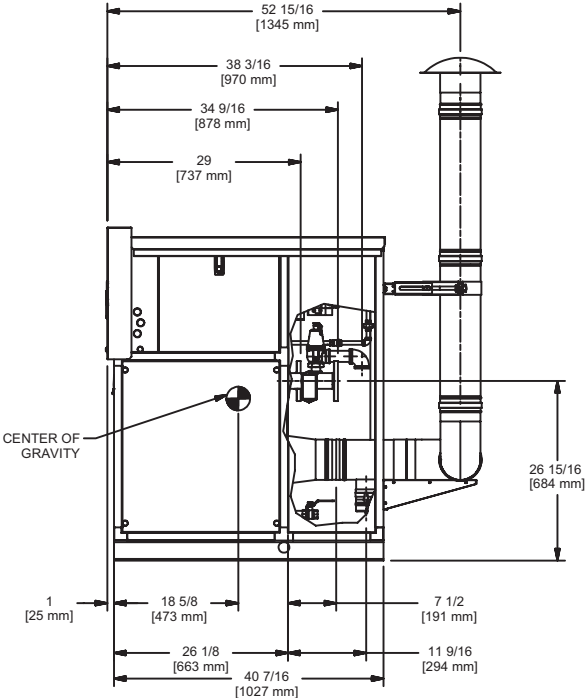
# OUTDOOR UNIT



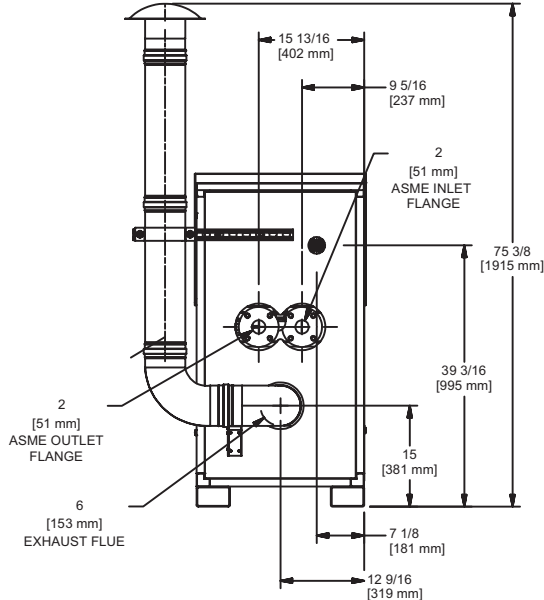
TOP VIEW



FRONT VIEW



SIDE VIEW



BACK VIEW

# FUTERA III 500

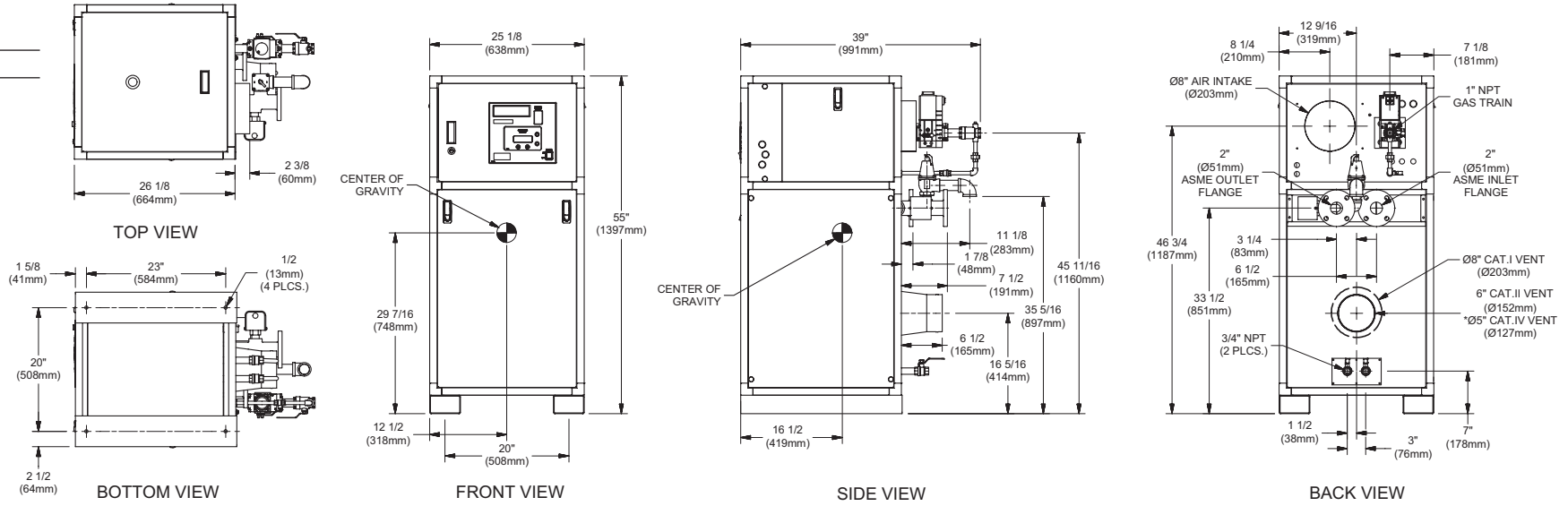
- Notes:**
1. Dimensions are approximate and should not be used to "rough-in" equipment.
  2. Dimensions are subject to change without notice.

# INDOOR UNIT

RSUB-56-L

## CODE OPTIONS

**CSD-1** Manual Reset LWCO



**Notes:**

1. Dimensions are approximate and should not be used to "rough-in" equipment.
2. Dimensions are subject to change without notice.

## BOILER CERTIFIED RATINGS & CAPACITIES

|                                |   |                                   |                    |
|--------------------------------|---|-----------------------------------|--------------------|
| <b>Fuel Type</b>               | Natural/Propane Gas                     | <b>Boiler FLA</b>                 | 4.4*               |
| <b>Input BTU/hr.</b>           | 750,000 / 220 kW                        | <b>Min. Gas Pressure Required</b> | 2" W.C.**          |
| <b>Output BTU/hr.</b>          | 640,500 / 188 kW                        | <b>Max. Gas Pressure Allowed</b>  | 14" W.C.           |
| <b>Electrical Requirements</b> | (L1, NEU, GND)<br>120 VAC/ 1 ph / 60 hz | <b>Operating Weight</b>           | 585 lbs. / 266 kg. |

## BOILER TEMPERATURE RISE / PRESSURE DROP

| 20°F / 11.1°C |     |               |     | 25°F / 13.9°C |     |               |     | 30°F / 16.7°C |     |               |     | 35°F / 19.4°C |     |               |     |
|---------------|-----|---------------|-----|---------------|-----|---------------|-----|---------------|-----|---------------|-----|---------------|-----|---------------|-----|
| Flow Rate     |     | Pressure Drop |     | Flow Rate     |     | Pressure Drop |     | Flow Rate     |     | Pressure Drop |     | Flow Rate     |     | Pressure Drop |     |
| GPM           | L/s | Ft            | kPa | GPM           | L/s | Ft            | kPa | GPM           | L/s | Ft            | kPa | GPM           | L/s | Ft            | kPa |
| 64.1          | 4.0 | 1.58          | 4.7 | 51.2          | 3.2 | 1.04          | 3.1 | 42.7          | 2.7 | 0.75          | 2.2 | 36.6          | 2.3 | 0.56          | 1.7 |

## BOILER / WATER HEATER TRIM & CONTROLS

|                          |                   |                          |                           |
|--------------------------|-------------------|--------------------------|---------------------------|
| <b>Main Gas Valve</b>    | Dungs MBC-SE      | <b>Air Switch</b>        | Cleveland NS2             |
| <b>Firing Valve</b>      | 1"                | <b>Blower Motor</b>      | Fasco 1/2 hp - FLA 2.3    |
| <b>Ignition Control</b>  | Honeywell RM7895C | <b>Relief Valve - MW</b> | 3/4" x 3/4" set @ 125 psi |
| <b>Operating Control</b> | HeatNet®          | <b>Relief Valve - MB</b> | 3/4" x 3/4" set @ 50 psi  |
| <b>High Limit</b>        | Jumo              | <b>Flow Switch</b>       | TACO                      |
| <b>Main Ball Valve</b>   | 1"                | <b>Pilot Regulator</b>   | White-Rodgers 25M         |

## WATER HEATER HOURLY RECOVERY CAPACITY (GPH & LPH)

| 40°F | 22°C | 60°F | 33°C | 80°F | 44°C | 100°F | 56°C | 120°F | 67°C | 140°F | 78°C |
|------|------|------|------|------|------|-------|------|-------|------|-------|------|
| 1873 | 7079 | 1248 | 4719 | 936  | 3539 | 749   | 2832 | 624   | 2360 | 535   | 2023 |

## A.S.M.E.

|                                 |                             |                    |                       |
|---------------------------------|-----------------------------|--------------------|-----------------------|
| <b>ASME Sect IV Htg Surface</b> | 97.79 Sq. Ft. / 9.08 Sq. M. | <b>Design Data</b> | Max. 160 psig & 250°F |
| <b>Water Volume</b>             | 3.7 gal / 14.01 Liters      |                    |                       |

\* Add circulator amps.

\*\* For incoming gas pressures lower than 2" W.C. natural or propane, consult factory.

**REP FIRM** \_\_\_\_\_  
**SUBMITTED BY** \_\_\_\_\_  
**JOB NAME** \_\_\_\_\_  
**ARCHITECT** \_\_\_\_\_  
**ENGINEER** \_\_\_\_\_  
**CONTRACTOR** \_\_\_\_\_  
**DATE** \_\_\_\_\_

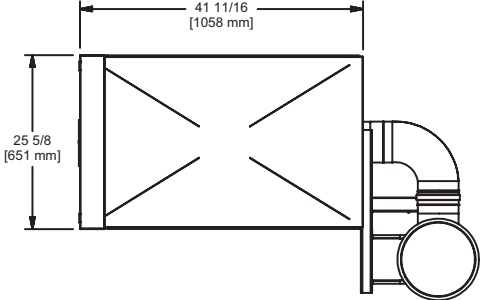
## FUTERA III 750

**Category I, II or IV Appliance**  
 (see Installation and Operation Manual for venting information)

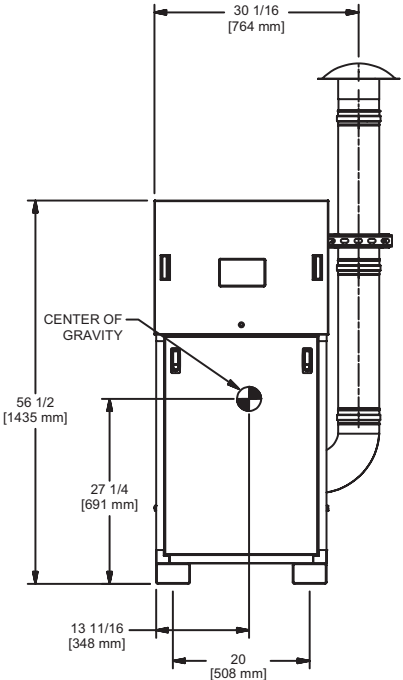


A Division of Mestek, Inc.  
 Westfield, MA 01085  
 (413) 568-9571

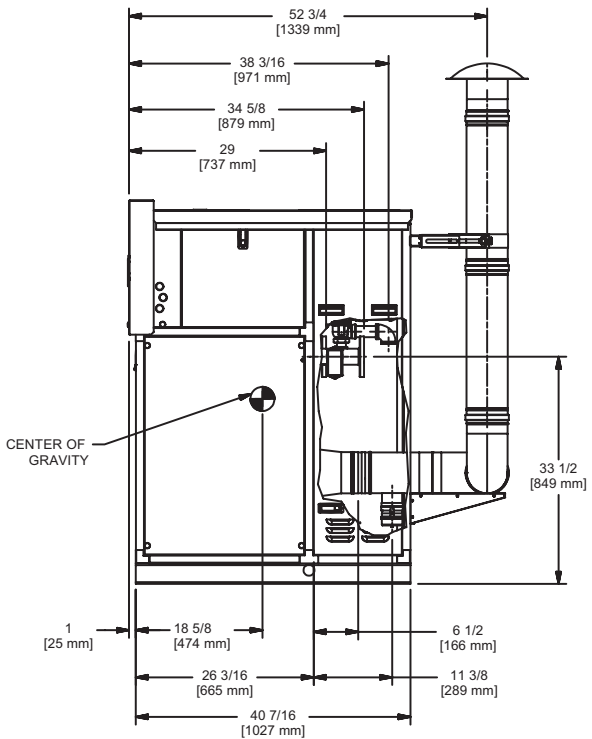
# OUTDOOR UNIT



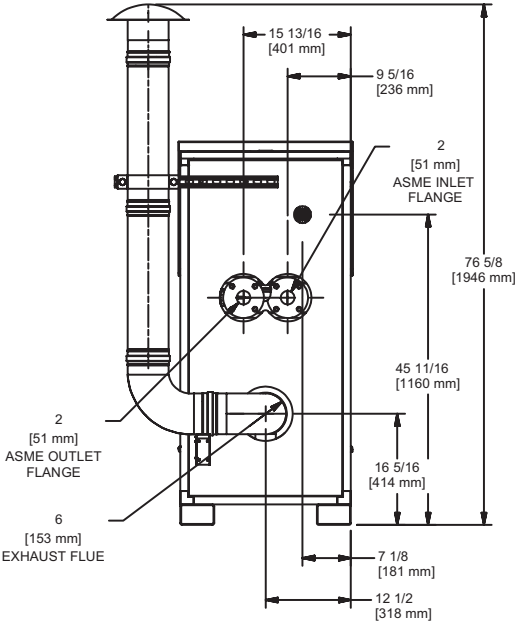
TOP VIEW



FRONT VIEW



SIDE VIEW



BACK VIEW

# FUTERA III 750

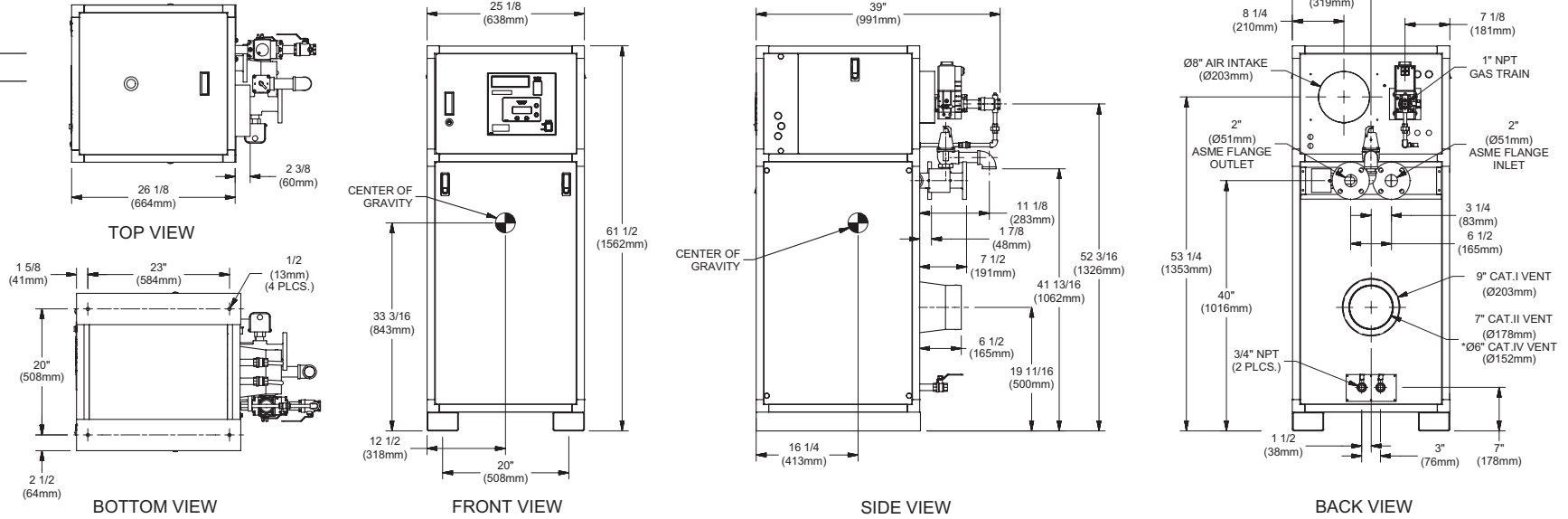
**Notes:**  
1. Dimensions are approximate and should not be used to "rough-in" equipment.  
2. Dimensions are subject to change without notice.

# INDOOR UNIT

RSUB-57-L

## CODE OPTIONS

**CSD-1** Manual Reset LWCO



**Notes:**

1. Dimensions are approximate and should not be used to "rough-in" equipment.
2. Dimensions are subject to change without notice.

## BOILER CERTIFIED RATINGS & CAPACITIES

|                                |  |                                   |                    |
|--------------------------------|--|-----------------------------------|--------------------|
| <b>Fuel Type</b>               | Natural/Propane Gas                      | <b>Boiler FLA</b>                 | 8.2*               |
| <b>Input BTU/hr.</b>           | 1,000,000 / 293 kW                       | <b>Min. Gas Pressure Required</b> | 2" W.C.**          |
| <b>Output BTU/hr.</b>          | 853,000 / 250 kW                         | <b>Max. Gas Pressure Allowed</b>  | 14" W.C.           |
| <b>Electrical Requirements</b> | (L1, NEU, GND)<br>120 VAC / 1 ph / 60 hz | <b>Operating Weight</b>           | 623 lbs. / 283 kg. |

## BOILER TEMPERATURE RISE / PRESSURE DROP

| 20°F / 11.1°C |     |               |      | 25°F / 13.9°C |     |               |     | 30°F / 16.7°C |     |               |     | 35°F / 19.4°C |     |               |     |
|---------------|-----|---------------|------|---------------|-----|---------------|-----|---------------|-----|---------------|-----|---------------|-----|---------------|-----|
| Flow Rate     |     | Pressure Drop |      | Flow Rate     |     | Pressure Drop |     | Flow Rate     |     | Pressure Drop |     | Flow Rate     |     | Pressure Drop |     |
| GPM           | L/s | Ft            | kPa  | GPM           | L/s | Ft            | kPa | GPM           | L/s | Ft            | kPa | GPM           | L/s | Ft            | kPa |
| 85.3          | 5.4 | 3.46          | 10.2 | 68.2          | 4.3 | 2.29          | 6.7 | 56.9          | 3.6 | 1.63          | 4.8 | 48.7          | 3.1 | 1.23          | 3.6 |

## BOILER / WATER HEATER TRIM & CONTROLS

|                          |                   |                          |                           |
|--------------------------|-------------------|--------------------------|---------------------------|
| <b>Main Gas Valve</b>    | Dungs MBC-SE      | <b>Air Switch</b>        | Cleveland NS2             |
| <b>Firing Valve</b>      | 1"                | <b>Blower Motor</b>      | Fasco 1/2 hp - FLA 2.3    |
| <b>Ignition Control</b>  | Honeywell RM7895C | <b>Relief Valve - MW</b> | 3/4" x 3/4" set @ 125 psi |
| <b>Operating Control</b> | HeatNet®          | <b>Relief Valve - MB</b> | 3/4" x 3/4" set @ 50 psi  |
| <b>High Limit</b>        | Jumo              | <b>Flow Switch</b>       | TACO                      |
| <b>Main Ball Valve</b>   | 1"                | <b>Pilot Regulator</b>   | White-Rodgers 25M         |

## WATER HEATER HOURLY RECOVERY CAPACITY (GPH & LPH)

| 40°F | 22°C | 60°F | 33°C | 80°F | 44°C | 100°F | 56°C | 120°F | 67°C | 140°F | 78°C |
|------|------|------|------|------|------|-------|------|-------|------|-------|------|
| 2491 | 9416 | 1661 | 6277 | 1245 | 4708 | 996   | 3766 | 830   | 3139 | 712   | 2690 |

## A.S.M.E.

|                                 |                               |                    |                       |
|---------------------------------|-------------------------------|--------------------|-----------------------|
| <b>ASME Sect IV Htg Surface</b> | 126.07 Sq. Ft. / 11.71 Sq. M. | <b>Design Data</b> | Max. 160 psig & 250°F |
| <b>Water Volume</b>             | 4 gal / 15.14 Liters          |                    |                       |

\* Add circulator amps.

\*\* For incoming gas pressures lower than 2" W.C. natural or propane, consult factory.

**REP FIRM** \_\_\_\_\_  
**SUBMITTED BY** \_\_\_\_\_  
**JOB NAME** \_\_\_\_\_  
**ARCHITECT** \_\_\_\_\_  
**ENGINEER** \_\_\_\_\_  
**CONTRACTOR** \_\_\_\_\_  
**DATE** \_\_\_\_\_

# FUTERA III 1000

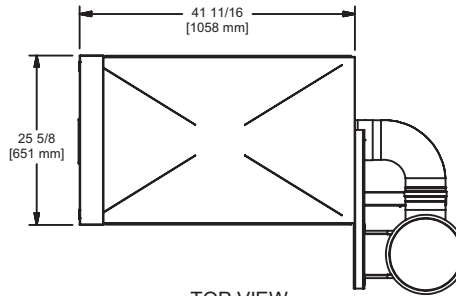
**Category I, II or IV Appliance**  
 (see Installation and Operation Manual for venting information)



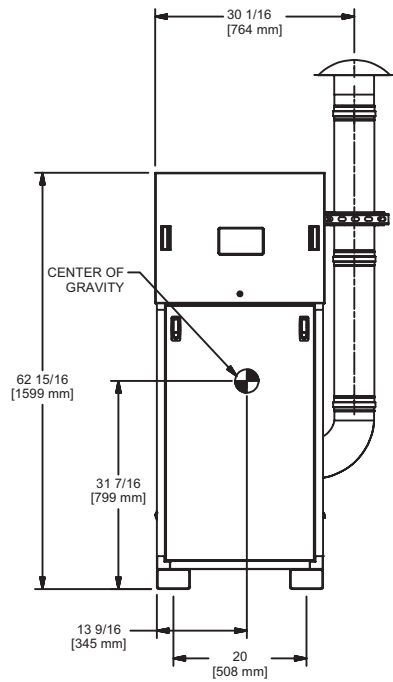
A Division of Mestek, Inc.  
 Westfield, MA 01085  
 (413) 568-9571

# OUTDOOR UNIT

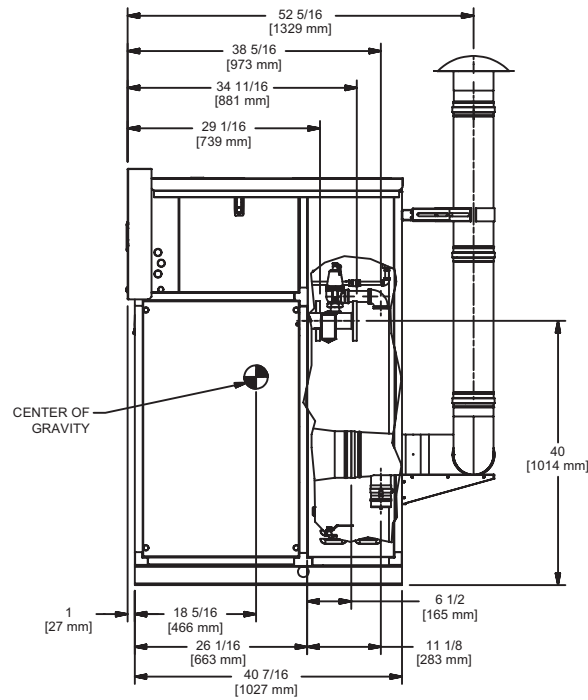
RSUB-112-B



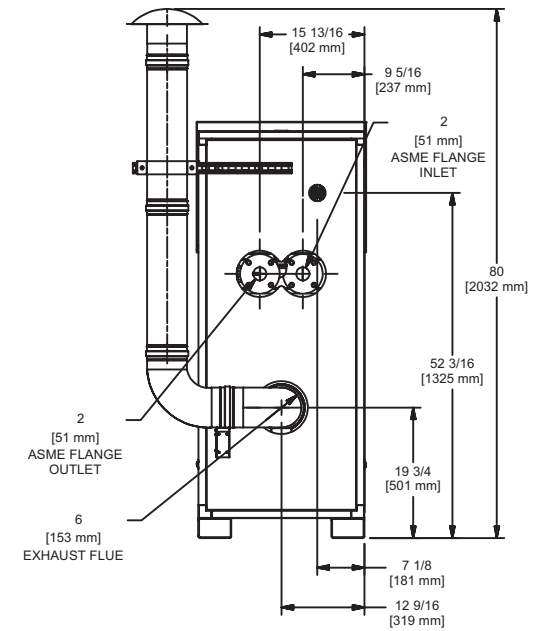
TOP VIEW



FRONT VIEW



SIDE VIEW



BACK VIEW

**FUTERA III 1000**

**Notes:**

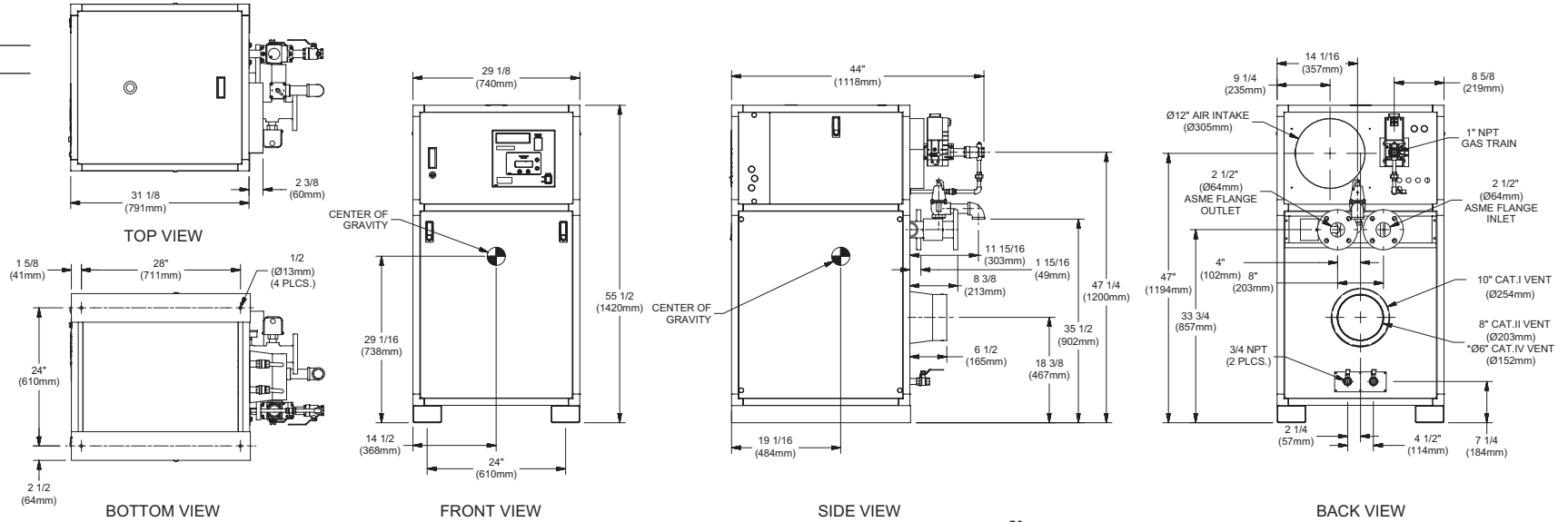
- 1. Dimensions are approximate and should not be used to "rough-in" equipment.
- 2. Dimensions are subject to change without notice.

# INDOOR UNIT

RSUB-58-L

## CODE OPTIONS

**CSD-1** Manual Reset LWCO



**Notes:**

1. Dimensions are approximate and should not be used to "rough-in" equipment.
2. Dimensions are subject to change without notice.

## BOILER CERTIFIED RATINGS & CAPACITIES

|                                |  |                                   |                    |
|--------------------------------|--|-----------------------------------|--------------------|
| <b>Fuel Type</b>               | Natural/Propane Gas                      | <b>Boiler FLA</b>                 | 11.3*              |
| <b>Input BTU/hr.</b>           | 1,250,000 / 366 kW                       | <b>Min. Gas Pressure Required</b> | 2" W.C.**          |
| <b>Output BTU/hr.</b>          | 1,066,250 / 312 kW                       | <b>Max. Gas Pressure Allowed</b>  | 14" W.C.           |
| <b>Electrical Requirements</b> | (L1, NEU, GND)<br>120 VAC / 1 ph / 60 hz | <b>Operating Weight</b>           | 748 lbs. / 340 kg. |

## BOILER TEMPERATURE RISE / PRESSURE DROP

| 20°F / 11.1°C |     |               |     | 25°F / 13.9°C |     |               |     | 30°F / 16.7°C |     |               |     | 35°F / 19.4°C |     |               |     |
|---------------|-----|---------------|-----|---------------|-----|---------------|-----|---------------|-----|---------------|-----|---------------|-----|---------------|-----|
| Flow Rate     |     | Pressure Drop |     | Flow Rate     |     | Pressure Drop |     | Flow Rate     |     | Pressure Drop |     | Flow Rate     |     | Pressure Drop |     |
| GPM           | L/s | Ft            | kPa | GPM           | L/s | Ft            | kPa | GPM           | L/s | Ft            | kPa | GPM           | L/s | Ft            | kPa |
| 107.0         | 6.8 | 2.14          | 6.3 | 85.6          | 5.4 | 1.42          | 4.2 | 71.3          | 4.5 | 1.01          | 3.0 | 61.1          | 3.9 | .76           | 2.2 |

## BOILER / WATER HEATER TRIM & CONTROLS

|                          |                   |                          |                           |
|--------------------------|-------------------|--------------------------|---------------------------|
| <b>Main Gas Valve</b>    | Dungs MBC-SE      | <b>Air Switch</b>        | Cleveland NS2             |
| <b>Firing Valve</b>      | 1"                | <b>Blower Motor</b>      | Fasco 1 hp - FLA 2.1      |
| <b>Ignition Control</b>  | Honeywell RM7895C | <b>Relief Valve - MW</b> | 3/4" x 3/4" set @ 125 psi |
| <b>Operating Control</b> | HeatNet®          | <b>Relief Valve - MB</b> | 3/4" x 1" set @ 50 psi    |
| <b>High Limit</b>        | Jumo              | <b>Flow Switch</b>       | TACO                      |
| <b>Main Ball Valve</b>   | 1"                | <b>Pilot Regulator</b>   | White-Rodgers 25M         |

## WATER HEATER HOURLY RECOVERY CAPACITY (GPH & LPH)

| 40°F | 22°C  | 60°F | 33°C | 80°F | 44°C | 100°F | 56°C | 120°F | 67°C | 140°F | 78°C |
|------|-------|------|------|------|------|-------|------|-------|------|-------|------|
| 3102 | 11727 | 2068 | 7818 | 1551 | 5864 | 1241  | 4691 | 1034  | 3909 | 886   | 3351 |

## A.S.M.E.

|                                 |                               |                    |                       |
|---------------------------------|-------------------------------|--------------------|-----------------------|
| <b>ASME Sect IV Htg Surface</b> | 133.76 Sq. Ft. / 12.43 Sq. M. | <b>Design Data</b> | Max. 160 psig & 250°F |
| <b>Water Volume</b>             | 4.7 gal / 17.79 Liters        |                    |                       |

\* Add circulator amps.

\*\* For incoming gas pressures lower than 2" W.C. natural or propane, consult factory.

**REP FIRM** \_\_\_\_\_  
**SUBMITTED BY** \_\_\_\_\_  
**JOB NAME** \_\_\_\_\_  
**ARCHITECT** \_\_\_\_\_  
**ENGINEER** \_\_\_\_\_  
**CONTRACTOR** \_\_\_\_\_  
**DATE** \_\_\_\_\_

## FUTERA III 1250

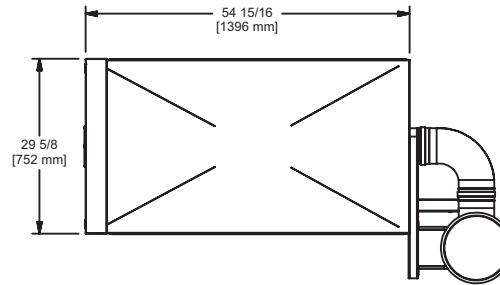
**Category I, II or IV Appliance**  
 (see Installation and Operation Manual for venting information)



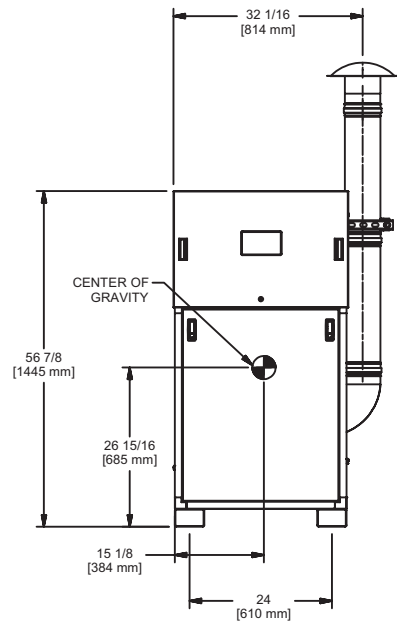
A Division of Mestek, Inc.  
 Westfield, MA 01085  
 (413) 568-9571

# OUTDOOR UNIT

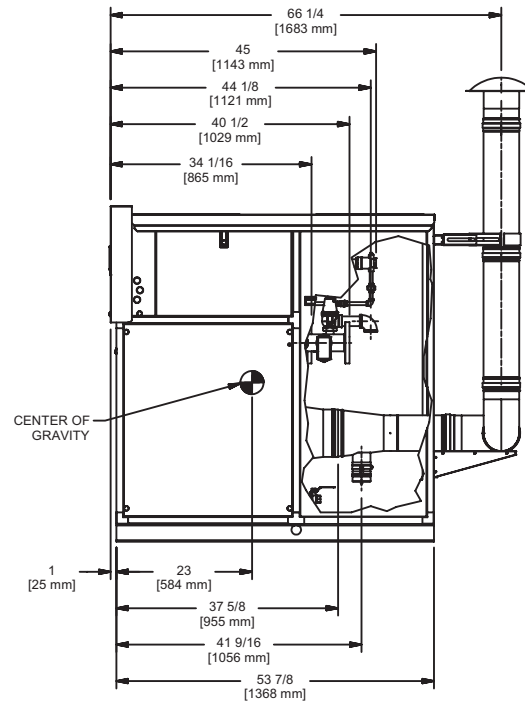
RSUB-113-B



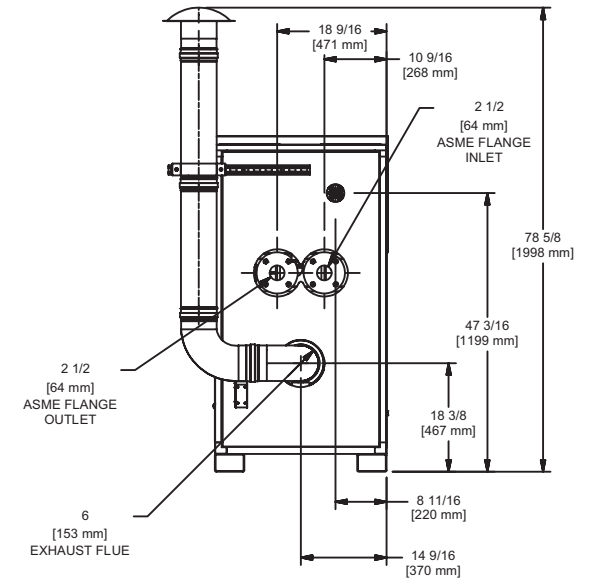
TOP VIEW



FRONT VIEW



SIDE VIEW



BACK VIEW

**FUTERA III 1250**

**Notes:**

1. Dimensions are approximate and should not be used to "rough-in" equipment.
2. Dimensions are subject to change without notice.

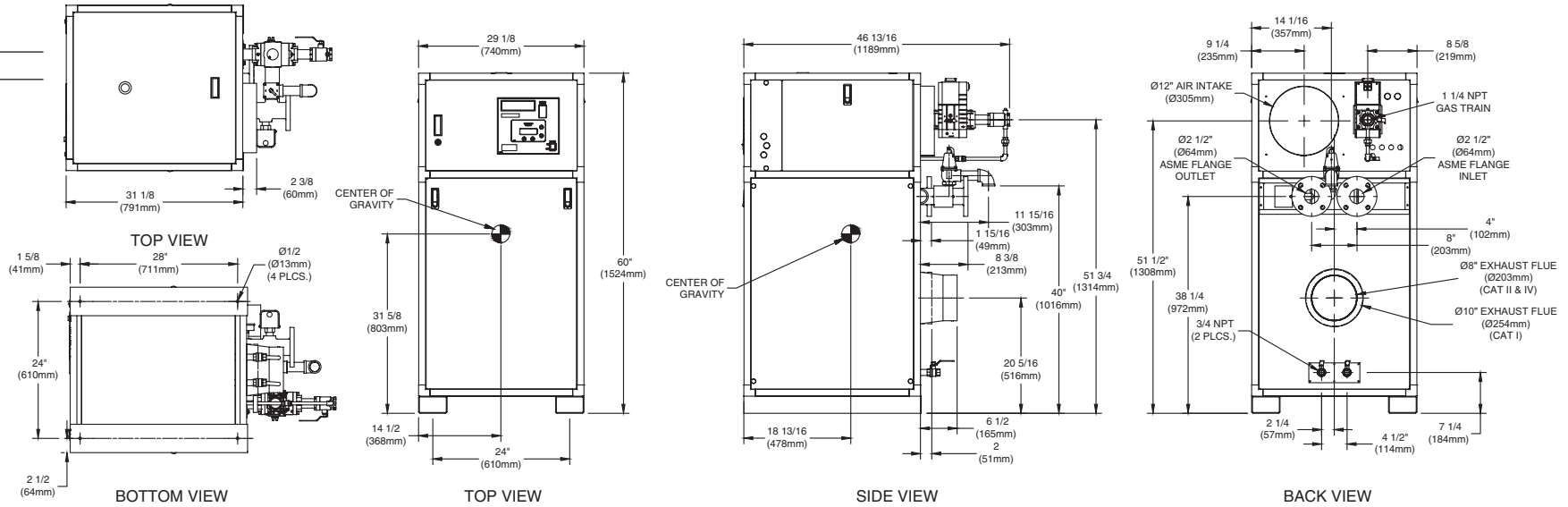


# INDOOR UNIT

RSUB-59-K

## CODE OPTIONS

**CSD-1** Manual Reset LWCO



### Notes:

1. Dimensions are approximate and should not be used to "rough-in" equipment.
2. Dimensions are subject to change without notice.

## BOILER CERTIFIED RATINGS & CAPACITIES

|                                |  |                                   |                    |
|--------------------------------|--|-----------------------------------|--------------------|
| <b>Fuel Type</b>               | Natural/Propane Gas                      | <b>Boiler FLA</b>                 | 11.3*              |
| <b>Input BTU/hr.</b>           | 1,500,000 / 440 kW                       | <b>Min. Gas Pressure Required</b> | 2" W.C.**          |
| <b>Output BTU/hr.</b>          | 1,278,000 / 374 kW                       | <b>Max. Gas Pressure Allowed</b>  | 14" W.C.           |
| <b>Electrical Requirements</b> | (L1, NEU, GND)<br>120 VAC / 1 ph / 60 hz | <b>Operating Weight</b>           | 824 lbs. / 374 kg. |

## BOILER TEMPERATURE RISE / PRESSURE DROP

| 20°F / 11.1°C |     |               |      | 25°F / 13.9°C |     |               |     | 30°F / 16.7°C |     |               |     | 35°F / 19.4°C |     |               |     |
|---------------|-----|---------------|------|---------------|-----|---------------|-----|---------------|-----|---------------|-----|---------------|-----|---------------|-----|
| Flow Rate     |     | Pressure Drop |      | Flow Rate     |     | Pressure Drop |     | Flow Rate     |     | Pressure Drop |     | Flow Rate     |     | Pressure Drop |     |
| GPM           | L/s | Ft            | kPa  | GPM           | L/s | Ft            | kPa | GPM           | L/s | Ft            | kPa | GPM           | L/s | Ft            | kPa |
| 127.8         | 8.1 | 3.58          | 10.6 | 102.2         | 6.5 | 2.37          | 7.0 | 85.2          | 5.4 | 1.69          | 5.0 | 73.0          | 4.6 | 1.27          | 3.7 |

## BOILER / WATER HEATER TRIM & CONTROLS

|                          |                   |                          |                           |
|--------------------------|-------------------|--------------------------|---------------------------|
| <b>Main Gas Valve</b>    | Dungs MBC-SE      | <b>Air Switch</b>        | Cleveland NS2             |
| <b>Firing Valve</b>      | 1 1/4"            | <b>Blower Motor</b>      | Fasco 1 hp - FLA 2.5      |
| <b>Ignition Control</b>  | Honeywell RM7895C | <b>Relief Valve - MW</b> | 3/4" x 3/4" set @ 125 psi |
| <b>Operating Control</b> | HeatNet®          | <b>Relief Valve - MB</b> | 1" x 1 1/4" set @ 50 psi  |
| <b>High Limit</b>        | Jumo              | <b>Flow Switch</b>       | TACO                      |
| <b>Main Ball Valve</b>   | 1 1/4"            | <b>Pilot Regulator</b>   | White-Rodgers 25M         |

## WATER HEATER HOURLY RECOVERY CAPACITY (GPH & LPH)

| 40°F | 22°C  | 60°F | 33°C | 80°F | 44°C | 100°F | 56°C | 120°F | 67°C | 140°F | 78°C |
|------|-------|------|------|------|------|-------|------|-------|------|-------|------|
| 3714 | 14039 | 2476 | 9359 | 1857 | 7019 | 1486  | 5616 | 1238  | 4680 | 1061  | 4011 |

## A.S.M.E.

|                                 |                               |                    |                       |
|---------------------------------|-------------------------------|--------------------|-----------------------|
| <b>ASME Sect IV Htg Surface</b> | 161.16 Sq. Ft. / 14.97 Sq. M. | <b>Design Data</b> | Max. 160 psig & 250°F |
| <b>Water Volume</b>             | 5 gal / 18.93 Liters          |                    |                       |

\* Add circulator amps.

\*\* For incoming gas pressures lower than 2" W.C. natural or propane, consult factory.

REP FIRM \_\_\_\_\_  
 SUBMITTED BY \_\_\_\_\_  
 JOB NAME \_\_\_\_\_  
 ARCHITECT \_\_\_\_\_  
 ENGINEER \_\_\_\_\_  
 CONTRACTOR \_\_\_\_\_  
 DATE \_\_\_\_\_

# FUTERA III 1500

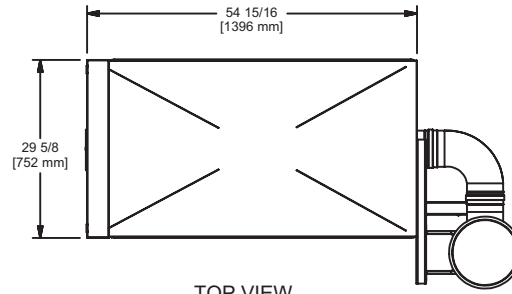
**Category I, II or IV Appliance**  
 (see Installation and Operation Manual for venting information)

**RBI**®  
 RELIABLE. BOLD. INNOVATIVE.

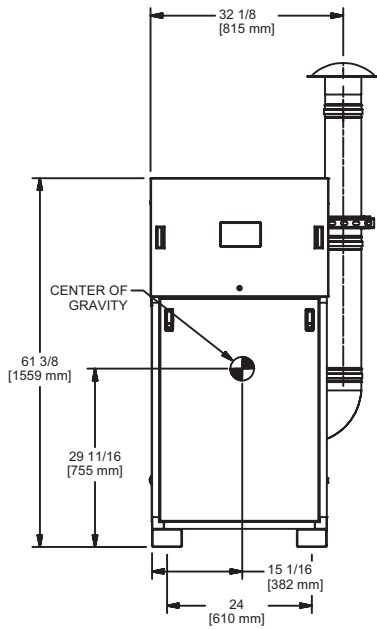
A Division of Mestek, Inc.  
 Westfield, MA 01085  
 (413) 568-9571

# OUTDOOR UNIT

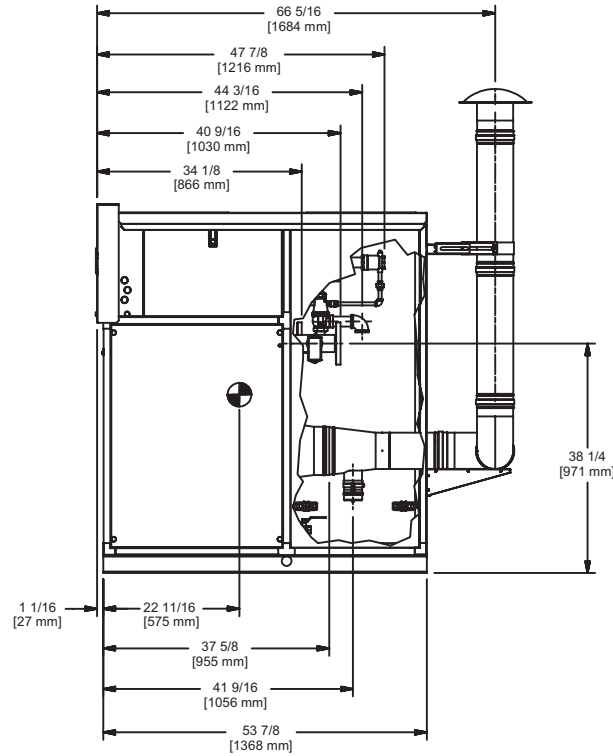
RSUB-114-B



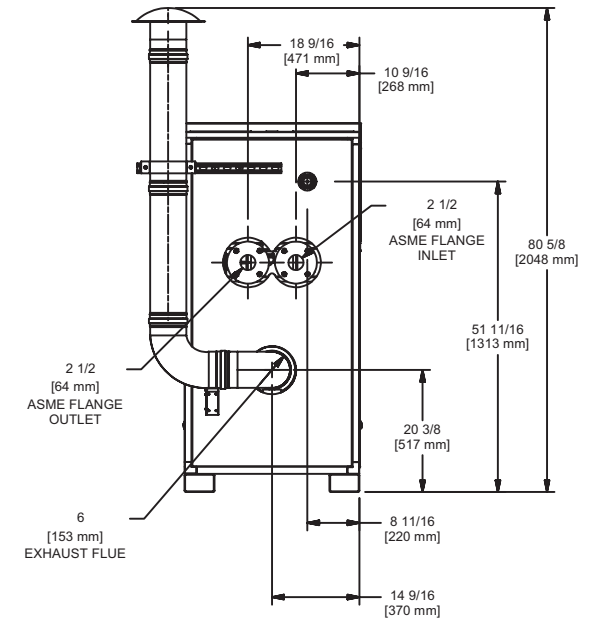
TOP VIEW



FRONT VIEW



SIDE VIEW



BACK VIEW

**FUTERA III 1500**

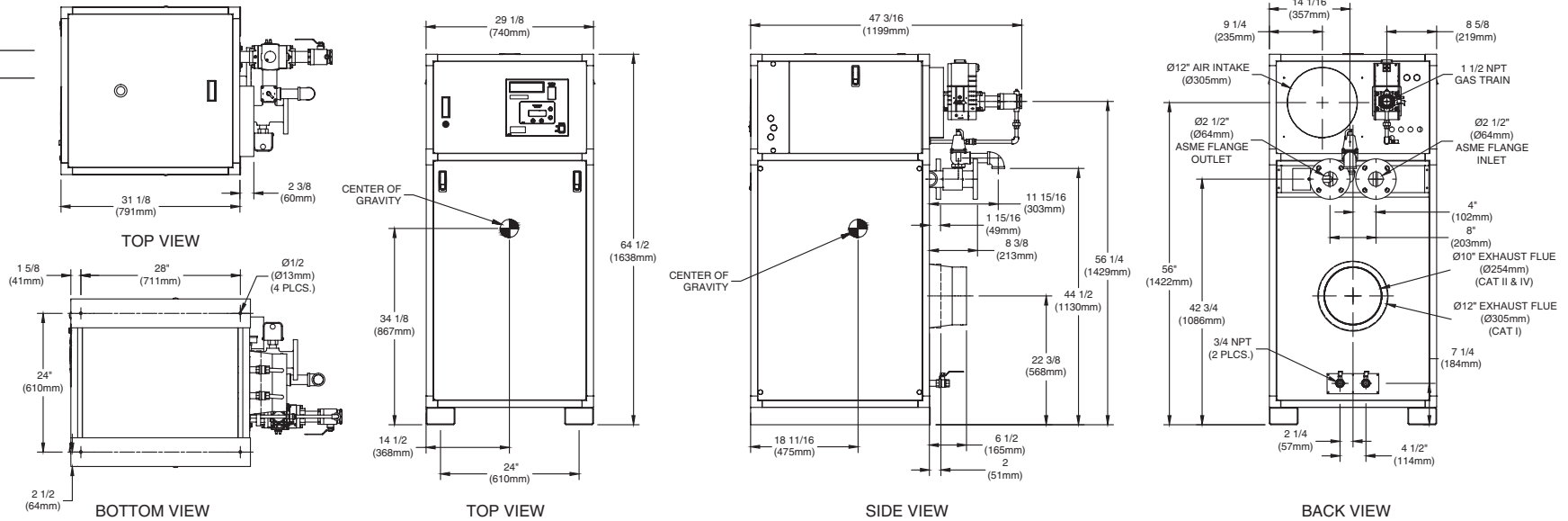
**Notes:**

1. Dimensions are approximate and should not be used to "rough-in" equipment.
2. Dimensions are subject to change without notice.

# INDOOR UNIT

## CODE OPTIONS

**CSD-1** Manual Reset LWCO



**Notes:**

1. Dimensions are approximate and should not be used to "rough-in" equipment.
2. Dimensions are subject to change without notice.

## BOILER CERTIFIED RATINGS & CAPACITIES

|                                |  |                                   |                    |
|--------------------------------|--|-----------------------------------|--------------------|
| <b>Fuel Type</b>               | Natural/Propane Gas                      | <b>Boiler FLA</b>                 | 11.3*              |
| <b>Input BTU/hr.</b>           | 1,750,000 / 513 kW                       | <b>Min. Gas Pressure Required</b> | 2" W.C.**          |
| <b>Output BTU/hr.</b>          | 1,491,000 / 437 kW                       | <b>Max. Gas Pressure Allowed</b>  | 14" W.C.           |
| <b>Electrical Requirements</b> | (L1, NEU, GND)<br>120 VAC / 1 ph / 60 hz | <b>Operating Weight</b>           | 827 lbs. / 375 kg. |

## BOILER TEMPERATURE RISE / PRESSURE DROP

| 25°F / 13.9°C |     |               |      | 30°F / 16.7°C |     |               |     | 35°F / 19.4°C |     |               |     |
|---------------|-----|---------------|------|---------------|-----|---------------|-----|---------------|-----|---------------|-----|
| Flow Rate     |     | Pressure Drop |      | Flow Rate     |     | Pressure Drop |     | Flow Rate     |     | Pressure Drop |     |
| GPM           | L/s | Ft            | kPa  | GPM           | L/s | Ft            | kPa | GPM           | L/s | Ft            | kPa |
| 119.3         | 7.5 | 3.69          | 10.9 | 99.4          | 6.3 | 2.63          | 7.8 | 85.2          | 5.4 | 1.98          | 5.8 |

## BOILER / WATER HEATER TRIM & CONTROLS

|                          |                   |                          |                           |
|--------------------------|-------------------|--------------------------|---------------------------|
| <b>Main Gas Valve</b>    | Dungs MBC-SE      | <b>Air Switch</b>        | Cleveland NS2             |
| <b>Firing Valve</b>      | 1 1/2"            | <b>Blower Motor</b>      | Fasco 1 hp - FLA 3.0      |
| <b>Ignition Control</b>  | Honeywell RM7895C | <b>Relief Valve - MW</b> | 3/4" x 3/4" set @ 125 psi |
| <b>Operating Control</b> | HeatNet®          | <b>Relief Valve - MB</b> | 1" x 1 1/4" set @ 50 psi  |
| <b>High Limit</b>        | Jumo              | <b>Flow Switch</b>       | TACO                      |
| <b>Main Ball Valve</b>   | 1 1/2"            | <b>Pilot Regulator</b>   | White-Rodgers 25M         |

## WATER HEATER HOURLY RECOVERY CAPACITY (GPH & LPH)

| 40°F | 22°C  | 60°F | 33°C  | 80°F | 44°C | 100°F | 56°C | 120°F | 67°C | 140°F | 78°C |
|------|-------|------|-------|------|------|-------|------|-------|------|-------|------|
| 4317 | 16319 | 2878 | 10879 | 2159 | 8160 | 1727  | 6528 | 1439  | 5440 | 1233  | 4663 |

## A.S.M.E.

|                                 |                               |                    |                       |
|---------------------------------|-------------------------------|--------------------|-----------------------|
| <b>ASME Sect IV Htg Surface</b> | 188.57 Sq. Ft. / 17.52 Sq. M. | <b>Design Data</b> | Max. 160 psig & 250°F |
| <b>Water Volume</b>             | 5.3 gal / 20.06 Liters        |                    |                       |

\* Add circulator amps.  
\*\* For incoming gas pressures lower than 2" W.C. natural or propane, consult factory.

**REP FIRM** \_\_\_\_\_  
**SUBMITTED BY** \_\_\_\_\_  
**JOB NAME** \_\_\_\_\_  
**ARCHITECT** \_\_\_\_\_  
**ENGINEER** \_\_\_\_\_  
**CONTRACTOR** \_\_\_\_\_  
**DATE** \_\_\_\_\_

# FUTERA III 1750

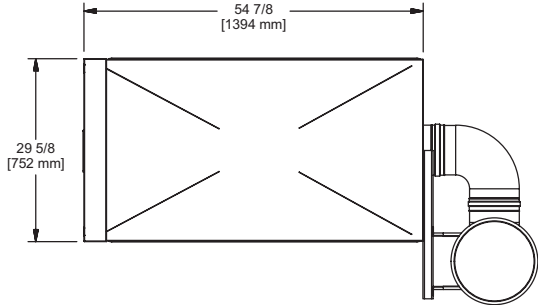
**Category I, II or IV Appliance**  
(see Installation and Operation Manual for venting information)



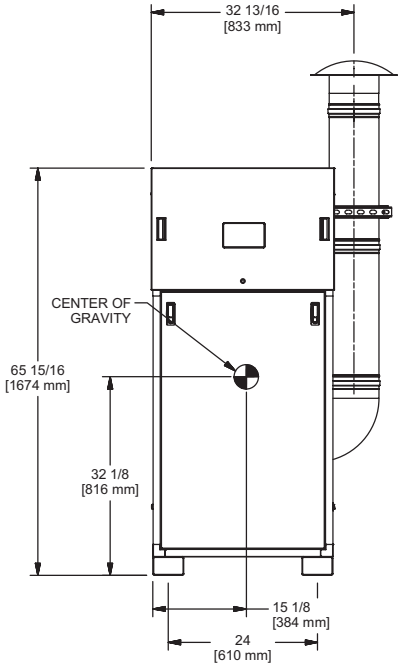
A Division of Mestek, Inc.  
Westfield, MA 01085  
(413) 568-9571

# OUTDOOR UNIT

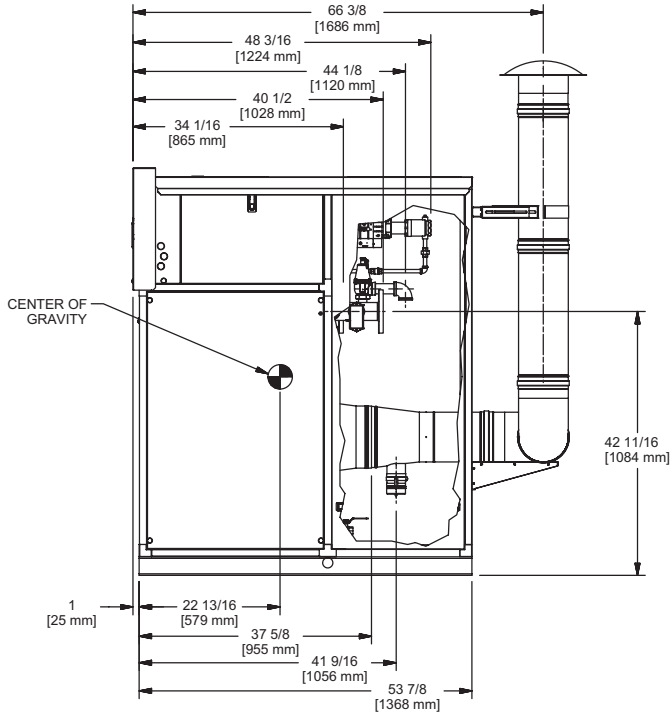
RSUB-115-B



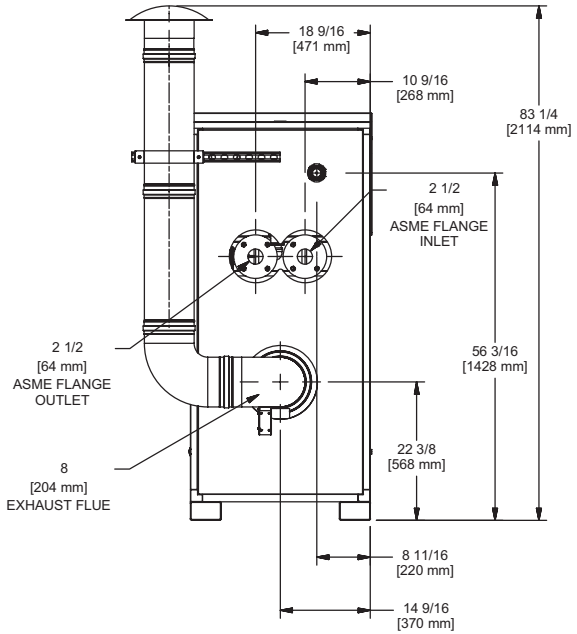
TOP VIEW



FRONT VIEW



SIDE VIEW



BACK VIEW

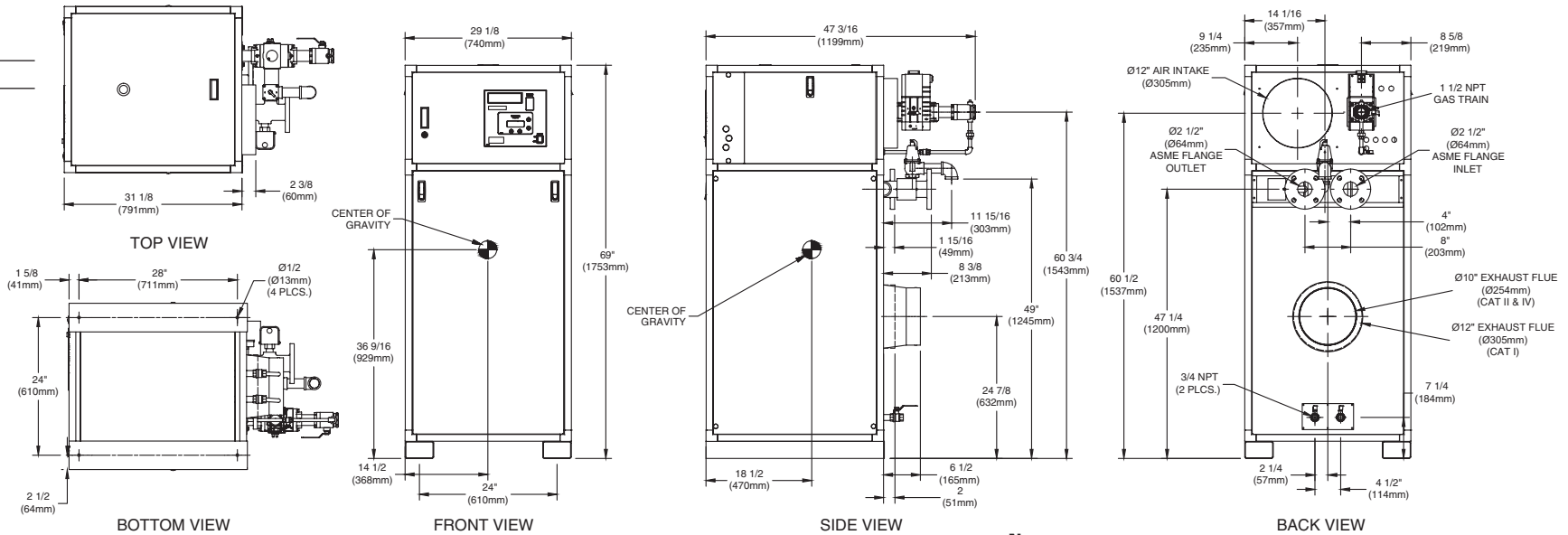
## FUTERA III 1750

- Notes:**
1. Dimensions are approximate and should not be used to "rough-in" equipment.
  2. Dimensions are subject to change without notice.

# INDOOR UNIT

## CODE OPTIONS

**CSD-1** Manual Reset LWCO



**Notes:**

1. Dimensions are approximate and should not be used to "rough-in" equipment.
2. Dimensions are subject to change without notice.

## BOILER CERTIFIED RATINGS & CAPACITIES

|                                |  |                                   |                     |
|--------------------------------|--|-----------------------------------|---------------------|
| <b>Fuel Type</b>               | Natural/Propane Gas                      | <b>Boiler FLA</b>                 | 11.3*               |
| <b>Input BTU/hr.</b>           | 2,000,000 / 586 kW                       | <b>Min. Gas Pressure Required</b> | 2" W.C.**           |
| <b>Output BTU/hr.</b>          | 1,703,999 / 499 kW                       | <b>Max. Gas Pressure Allowed</b>  | 14" W.C.            |
| <b>Electrical Requirements</b> | (L1, NEU, GND)<br>120 VAC / 1 ph / 60 hz | <b>Operating Weight</b>           | 1003 lbs. / 455 kg. |

## BOILER TEMPERATURE RISE / PRESSURE DROP

| 25°F / 13.9°C |     |               |      | 30°F / 16.7°C |     |               |      | 35°F / 19.4°C |     |               |     |
|---------------|-----|---------------|------|---------------|-----|---------------|------|---------------|-----|---------------|-----|
| Flow Rate     |     | Pressure Drop |      | Flow Rate     |     | Pressure Drop |      | Flow Rate     |     | Pressure Drop |     |
| GPM           | L/s | Ft            | kPa  | GPM           | L/s | Ft            | kPa  | GPM           | L/s | Ft            | kPa |
| 136.3         | 8.6 | 5.41          | 15.9 | 113.6         | 7.2 | 3.86          | 11.4 | 97.4          | 6.1 | 2.90          | 8.5 |

## BOILER / WATER HEATER TRIM & CONTROLS

|                          |                   |                          |                           |
|--------------------------|-------------------|--------------------------|---------------------------|
| <b>Main Gas Valve</b>    | Dungs MBC-SE      | <b>Air Switch</b>        | Cleveland NS2             |
| <b>Firing Valve</b>      | 1 1/2"            | <b>Blower Motor</b>      | Fasco 1 hp - FLA 3.0      |
| <b>Ignition Control</b>  | Honeywell RM7895C | <b>Relief Valve - MW</b> | 3/4" x 3/4" set @ 125 psi |
| <b>Operating Control</b> | HeatNet®          | <b>Relief Valve - MB</b> | 1" x 1 1/4" set @ 50 psi  |
| <b>High Limit</b>        | Jumo              | <b>Flow Switch</b>       | TACO                      |
| <b>Main Ball Valve</b>   | 1 1/2"            | <b>Pilot Regulator</b>   | White-Rodgers 25M         |

## WATER HEATER HOURLY RECOVERY CAPACITY (GPH & LPH)

| 40°F | 22°C  | 60°F | 33°C  | 80°F | 44°C | 100°F | 56°C | 120°F | 67°C | 140°F | 78°C |
|------|-------|------|-------|------|------|-------|------|-------|------|-------|------|
| 4922 | 18605 | 3281 | 12403 | 2461 | 9303 | 1969  | 7442 | 1641  | 6202 | 1406  | 5316 |

## A.S.M.E.

|                                 |                               |                    |                       |
|---------------------------------|-------------------------------|--------------------|-----------------------|
| <b>ASME Sect IV Htg Surface</b> | 215.98 Sq. Ft. / 20.06 Sq. M. | <b>Design Data</b> | Max. 160 psig & 250°F |
| <b>Water Volume</b>             | 5.7 gal / 21.58 Liters        |                    |                       |

\* Add circulator amps.

\*\* For incoming gas pressures lower than 2" W.C. natural or propane, consult factory.

**REP FIRM** \_\_\_\_\_  
**SUBMITTED BY** \_\_\_\_\_  
**JOB NAME** \_\_\_\_\_  
**ARCHITECT** \_\_\_\_\_  
**ENGINEER** \_\_\_\_\_  
**CONTRACTOR** \_\_\_\_\_  
**DATE** \_\_\_\_\_

# FUTERA III 2000

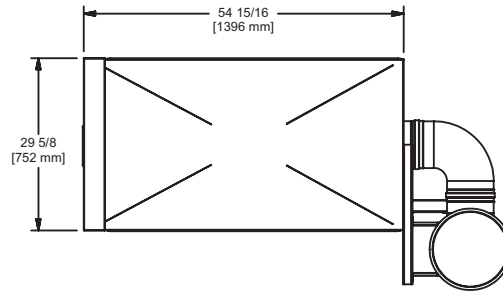
**Category I, II or IV Appliance**  
 (see Installation and Operation Manual for venting information)



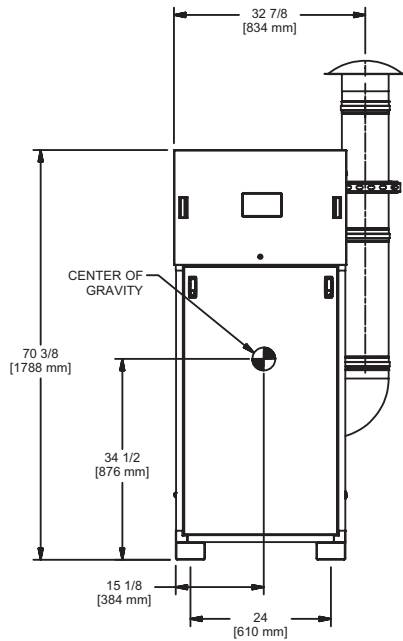
A Division of Mestek, Inc.  
 Westfield, MA 01085  
 (413) 568-9571

# OUTDOOR UNIT

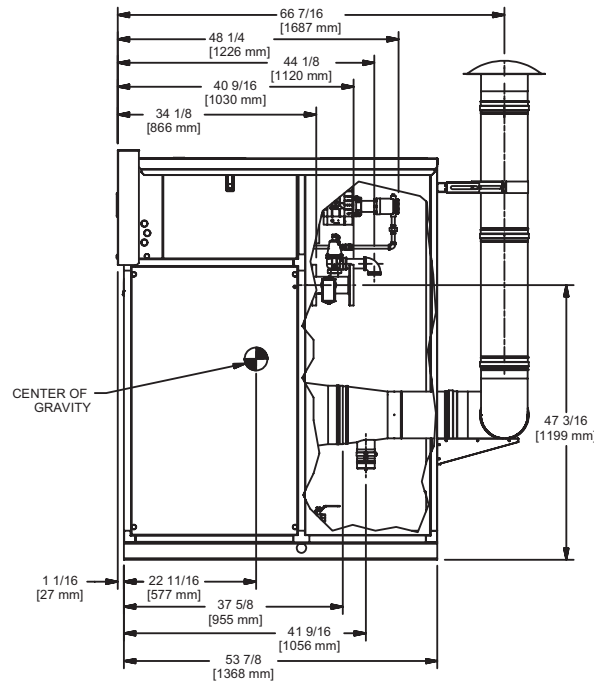
RSUB-116-B



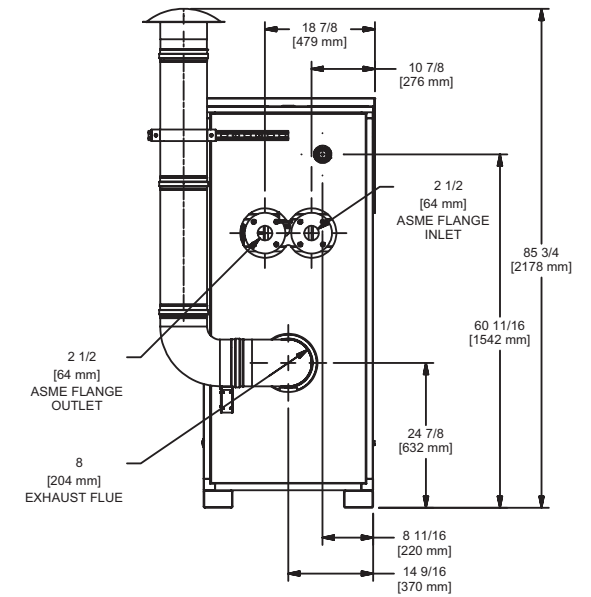
TOP VIEW



FRONT VIEW



SIDE VIEW



BACK VIEW

## FUTERA III 2000

**Notes:**

1. Dimensions are approximate and should not be used to "rough-in" equipment.
2. Dimensions are subject to change without notice.